

CAMDEN



DESIGN FEATURES

Gourmet Kitchen with 900mm Appliances and Caesarstone Benchtops

Master Bedroom With Fully Appointed En-suite, Walk-In Robe and Dressing Area

Separate Theatre Room and Games Room

Large Alfresco Area

Quality Floor Coverings and Blinds

Double Garage with Sectional Door

Spacious Open Plan Living

Jason Windows Sliding Doors and Windows



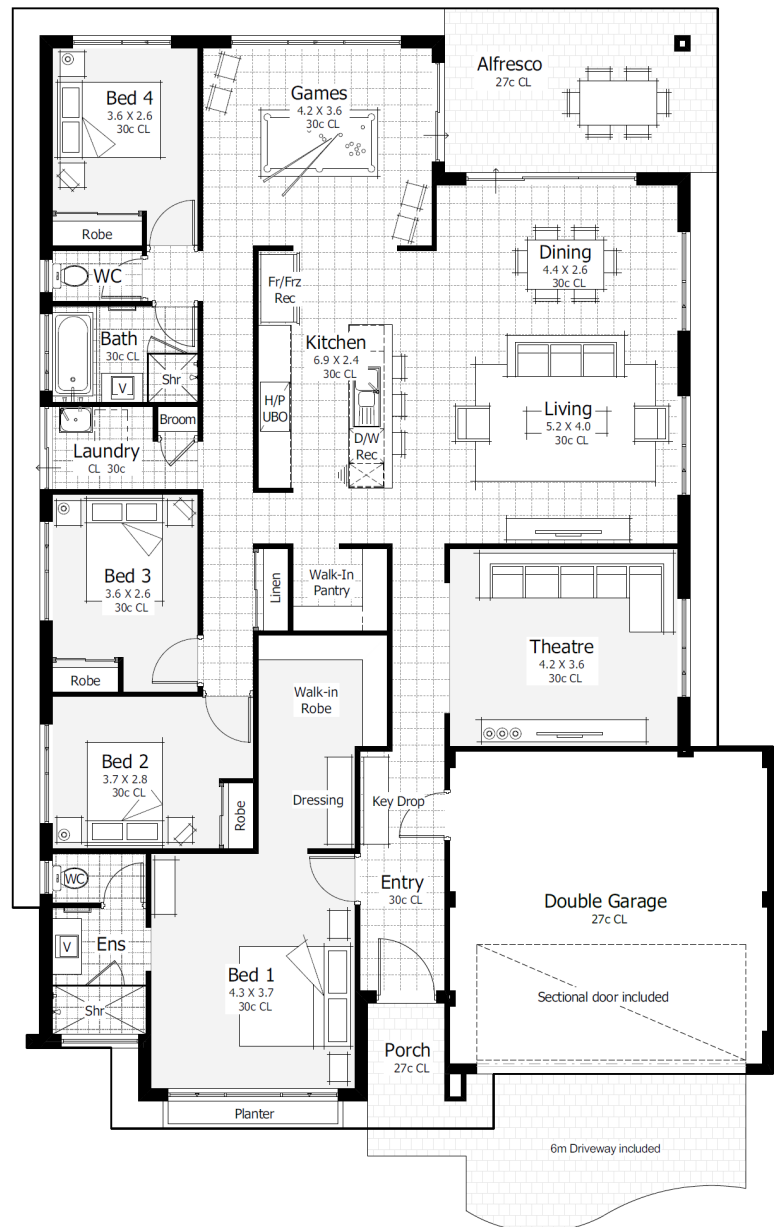
LOT SIZE

Fits on a 15m X 30m block



ON DISPLAY AT

36 Heartwood Boulevard, Baldvis



Homebuyers
Centre

© The Copyright of this design is the sole property of Homebuyers Centre and there is no implied licence for its use for any purpose.